



Quicker - Safer - Better



Advanced Seal-Bonded Solutions

If you require more information, do not hesitate to contact us!

130 Rue de Lourmel  
75015 Paris FRANCE

+33 1 84 25 75 06

contact@cold-pad.com



cold-pad.com



## Non-intrusive fasteners

Bonded anchor for steel & concrete

Let's shift FPSO Structural Maintenance from  
Planned Shutdown to General Maintenance.



# C-Claw S1000

## Non-intrusive & heavy-duty fastener

C-CLAW S1000 is a non-intrusive bonded fastener - the alternative to welding, drilling and magnets. It is specially designed for challenging environments, making it suitable for quick industrial installations.



Class approved for offshore environments



Quick installation



Permanent installation



No hot work required



Low POB solution



Avoid shutdowns and associated costs



Diameter : 120 mm

### FEATURES

- Ultimate capacity : **90kN (9000Kg)**
- Regulatory capacity : **10kN (1000Kg)**
- Diameter : **120 mm**
- Installation time : **< 20 min**

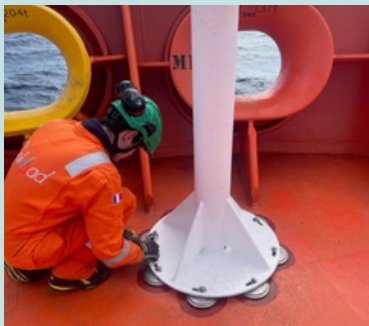
## Typical applications :



Large pipe supports



Handrails



Mast supports

# C-Claw S300

## Non-intrusive fastener installed in less than 2min

C-CLAW S300 is the ultimate equipment for marine and offshore environments, and other highly regulated industries. This versatile fastener can be used for any maintenance work **during your operations**, as well as for new designs.



Diameter : 70 mm

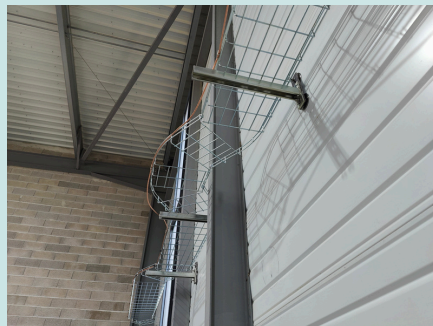
### FEATURES

- Ultimate capacity : **20kN ( 2000Kg)**
- Regulatory capacity : **3kN (300Kg)**
- Diameter : **70 mm**
- Installation time : **< 2 min**

## Typical applications :



Ladders



Cable trays



Pipe supports



### Controlled process bonding with dedicated tool

- Precise data
- Self-supporting
- User-friendly



### Controlled process bonding with dedicated portable tool

- Lightweight
- Compact
- User-friendly

