

# Bonded structural repair

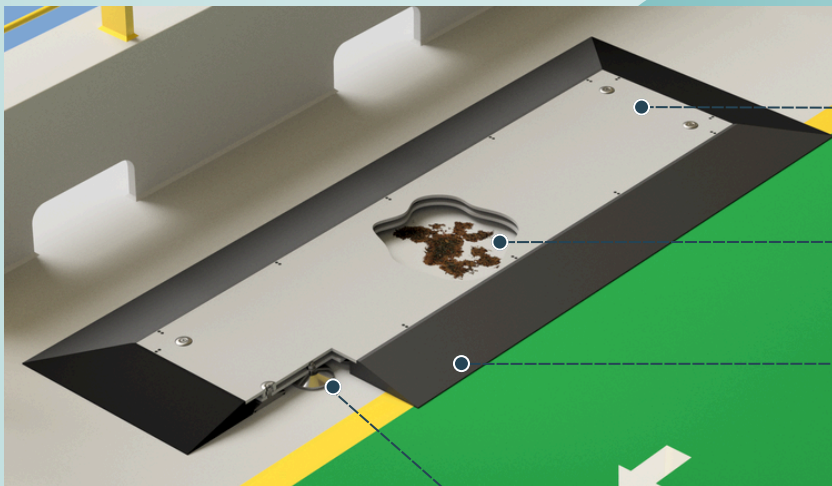
Cold & non-intrusive repair for  
small surfaces

Cold Pad solutions enable shifting FPSO maintenance from planned  
shutdown to general maintenance

# Cellular

## Bonded structural reinforcement

Cellular is a non-intrusive structural repair for defects under 10m<sup>2</sup> on decks and hulls. It restores structural integrity and protects from further deterioration. Even in offshore condition.



**Carbon steel plate**

**Existing structure**

Plate thinning due to corrosion

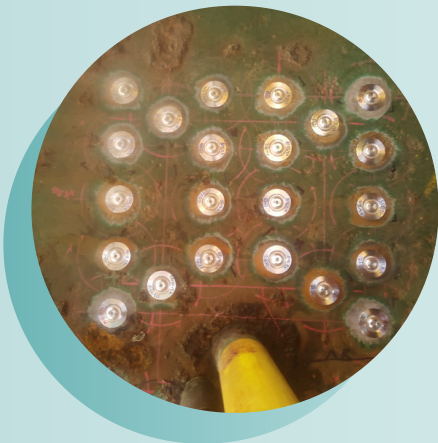
**Slope of surface**

Prevent tripping hazard

**C-Claw fastener**

Bonded anchor for non-intrusive fastening

## Installation sequence



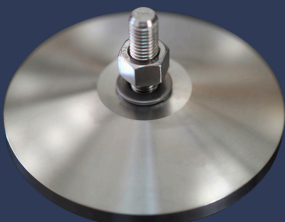
**Bonding of C-Claws** on the corroded area.



**Transfer of stresses** from the corroded structure to the new plate.



Steel plate to **protect the area** from further corrosion.



## C-Claw

is a non-intrusive fastener, an alternative to welding and drilling

It fixes the Cellular without hot work and helps transfer the stresses from the old structure to the new plate.

# Cellular for permanent immersion

## Cellular - designed for permanent immersion

This version of the Cellular can be permanently immersed thanks to a resin injection within the plate. This non-structural polymer provides protection for the C-Claw against external environment.

### Openings

For polymer injection

### Carbon steel plate

### Non structural polymer

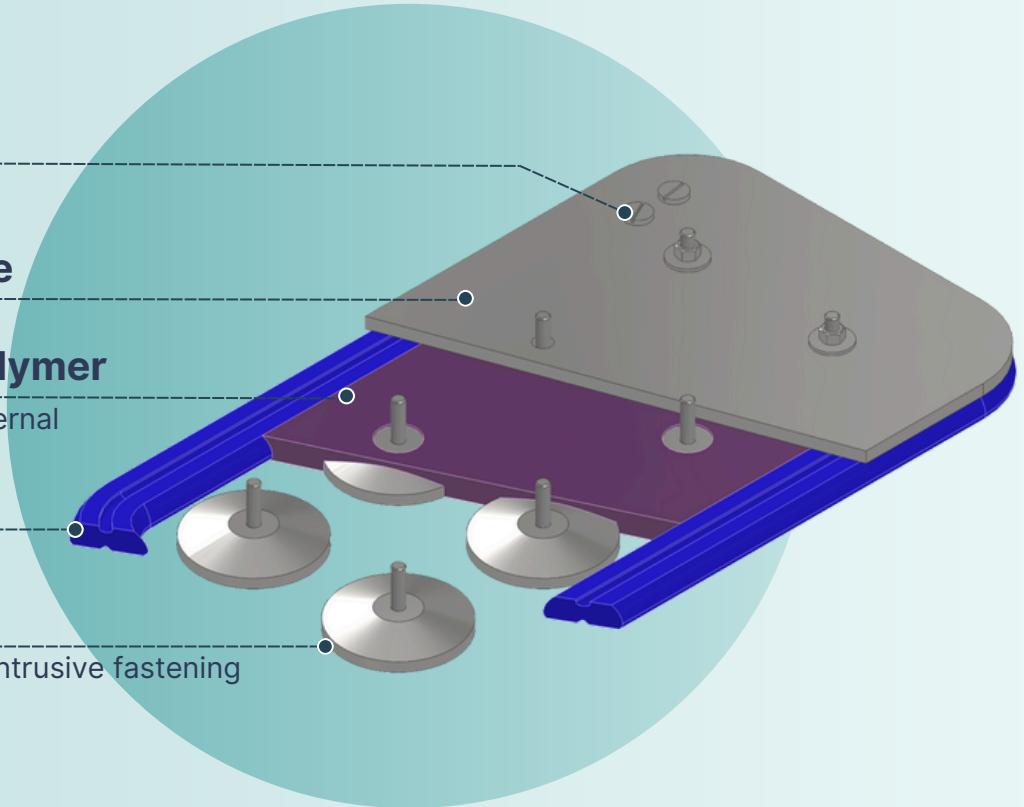
Protect C-Claw from external

### Seal

Hydro carbure resistant

### C-Claw fastener

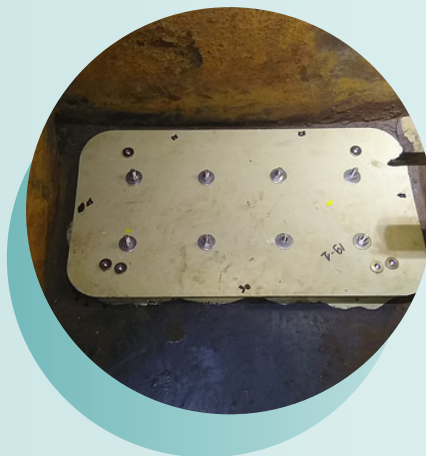
Bonded anchor for non-intrusive fastening



## Installation sequence



**Bonding of C-Claws** on the corroded area.



**Transfer of stresses** from the corroded structure to the new plate.



**Polymer injection** to give permanent capacities.



Low POB  
solution (1/2 pax)



No hot work  
required



Permanent  
status



Class approved  
solution



Quicker - Safer - Better



## Advanced Seal-Bonded Solutions

If you require more information, do not hesitate to contact us!

130 Rue de Lourmel  
75015 Paris FRANCE

+33 1 84 25 75 06

[contact@cold-pad.com](mailto:contact@cold-pad.com)



[cold-pad.com](http://cold-pad.com)